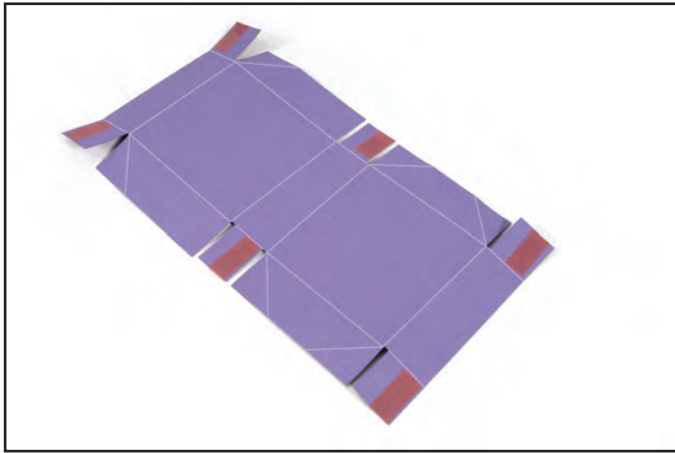
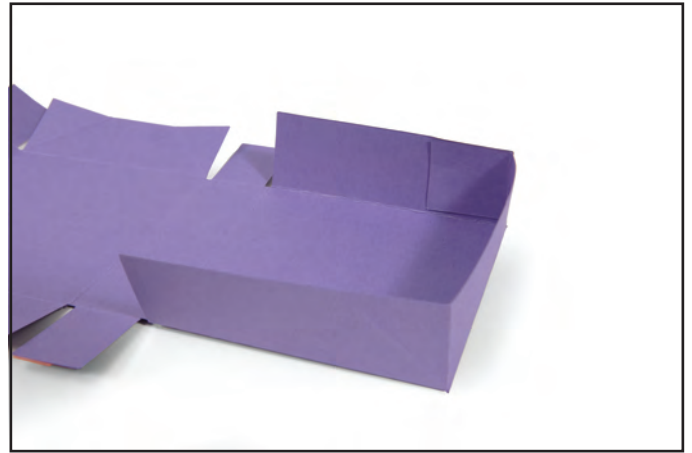


657675 Sizzix® Bigz™ Pro Die - Box w/Lid #3 by E.L. Smith



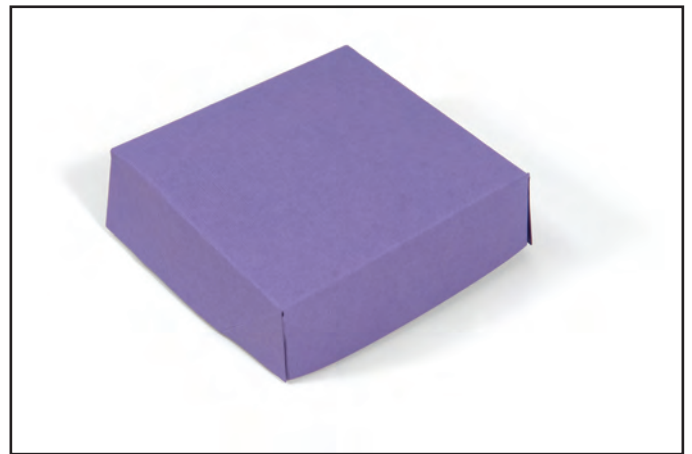
1. Die-cut and apply adhesive as shown.



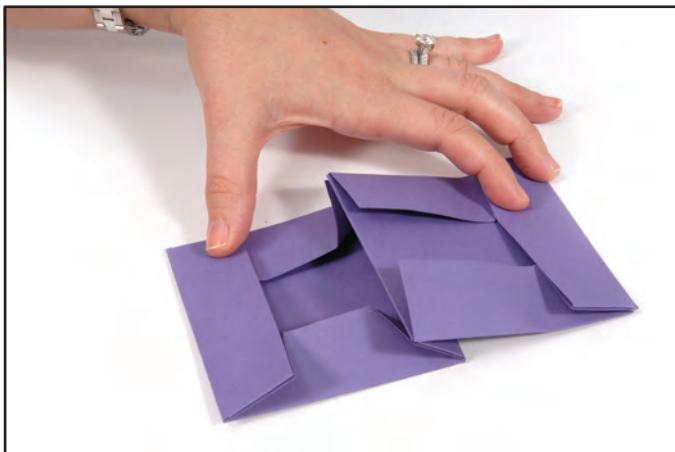
2. Adhere end tabs behind the side tabs.



4. Complete box by adhering all tabs behind side flaps as shown.



4. Close box.



5. Box may be flattened if desired. Open the box and fold the side panels in first followed by the end panels.



6. Once the box has been laid flat, it can be folded at the middle as shown.